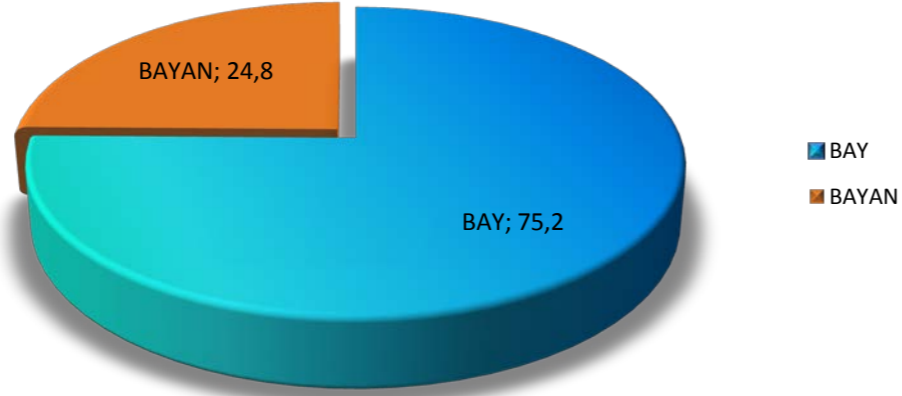


**TÜRKİYE GENELİ
HAKİM VE CUMHURİYET SAVCISI KADRO DURUMU**

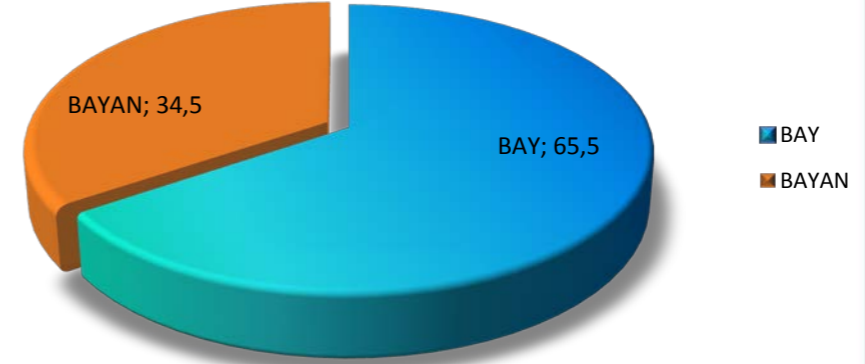
	BAY	%	BAYAN	%
HAKİM	5147	65,5	2706	34,5
SAVCI	4034	92,8	314	7,2
TOPLAM	9181	75,2	3020	24,8

- 1- Türkiye geneli toplam 12201 hakim ve savcı bulunmaktadır. Bunun 7853'ü (% 64,4) hakim, 4348'i (% 35,6) savcıdır; 9181'i (% 75,2) bay, 3020'si (%24,8) bayandır.
- 2- Türkiye geneli toplam 7853 hakim bulunmaktadır. Bunun 5147'si (% 65,5) bay, 2706'sı (% 34,5) bayandır
- 3- Türkiye geneli toplam 4348 savcı bulunmaktadır. Bunun 4034'ü (% 92,8) bay, 314'ü (% 7,2) bayandır.

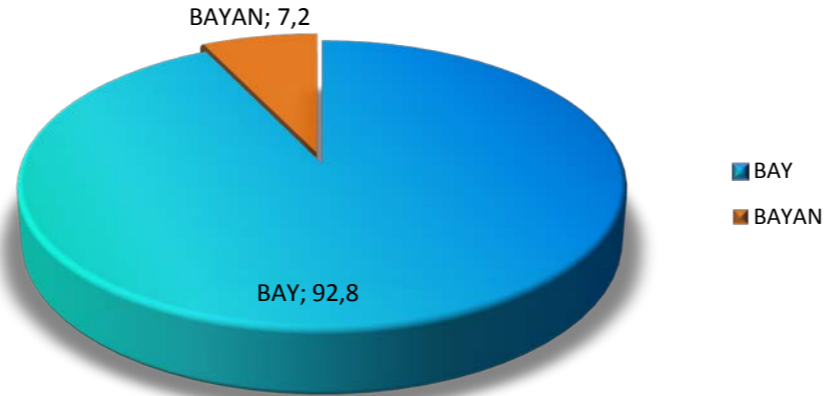
TÜRKİYE GENELİ HAKİM-SAVCI SAYILARININ CİNSİYETE GÖRE DAĞILIMI



TÜRKİYE GENELİ HAKİM SAYILARININ CİNSİYETE GÖRE DAĞILIMI



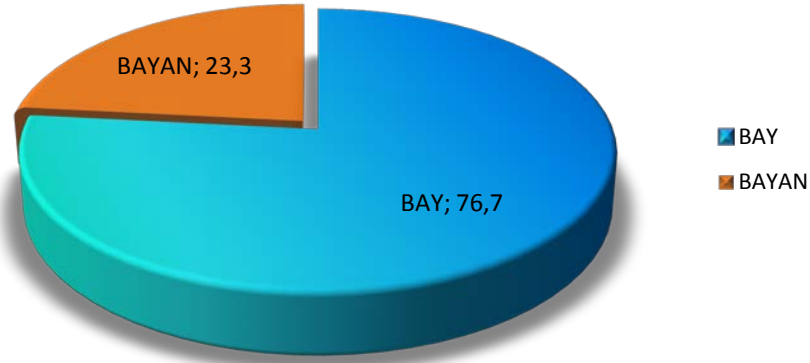
TÜRKİYE GENELİ SAVCI SAYILARININ CİNSİYETE GÖRE DAĞILIMI



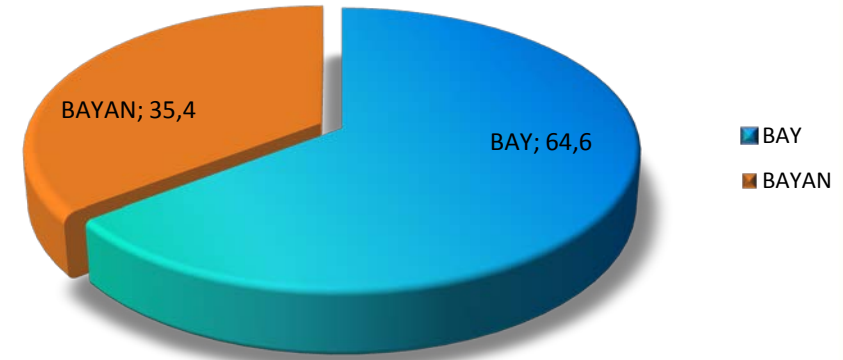
**ADLİ YARGI
HAKİM VE CUMHURİYET SAVCISI KADRO DURUMU**

	BAY	%	BAYAN	%
HAKİM	3673	64,6	2014	35,4
SAVCI	3783	93,7	256	6,3
TOPLAM	7456	76,7	2270	23,3

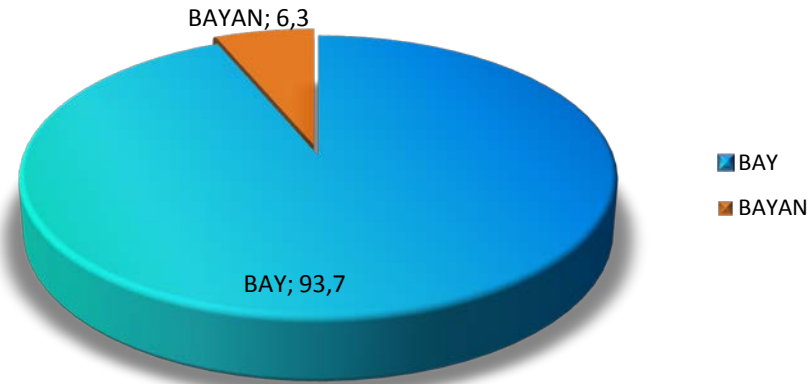
ADLİ YARGI HAKİM-SAVCI SAYILARININ CİNSİYETE GÖRE DAĞILIMI



ADLİ YARGI HAKİM SAYILARININ CİNSİYETE GÖRE DAĞILIMI



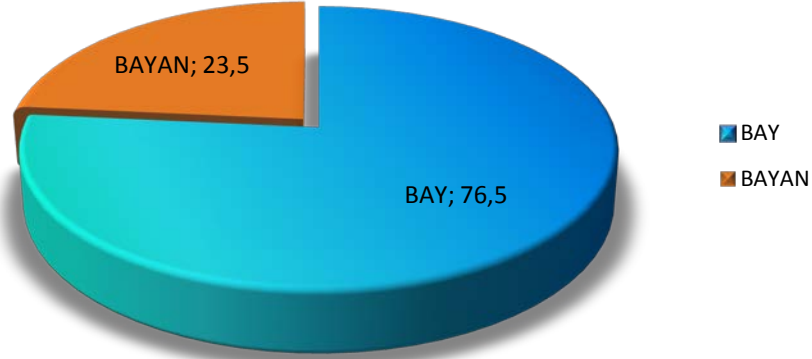
ADLİ YARGI SAVCI SAYILARININ CİNSİYETE GÖRE DAĞILIMI



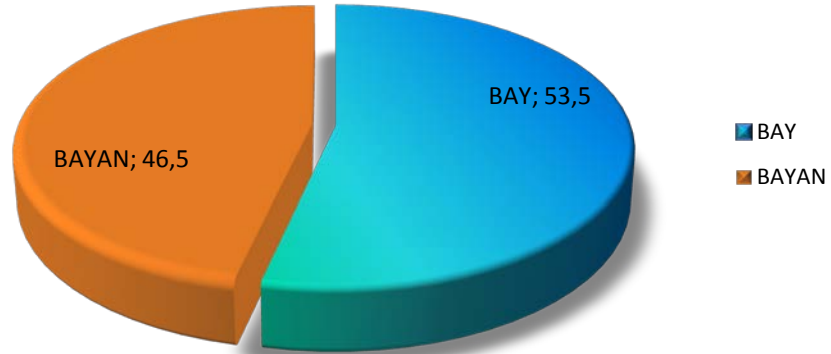
DANIŐTAY
ÜYE, HAKİM VE SAVCI KADRO DURUMU

	BAY	%	BAYAN	%
ÜYE	114	76,5	35	23,5
TETKİK HAKİMİ	170	60,3	112	39,7
SAVCI	38	53,5	33	46,5
TOPLAM	170	33,9	180	35,9

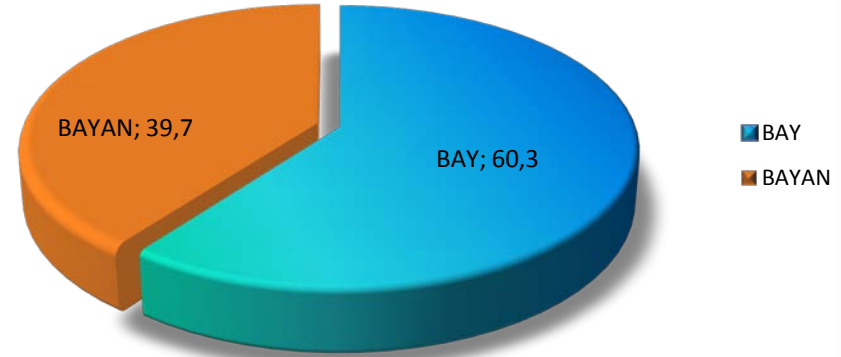
DANIŐTAY ÜYE SAYILARININ CİNSİYETE GÖRE DAĞILIMI



DANIŐTAY SAVCISI SAYISININ CİNSİYETE GÖRE DAĞILIMI



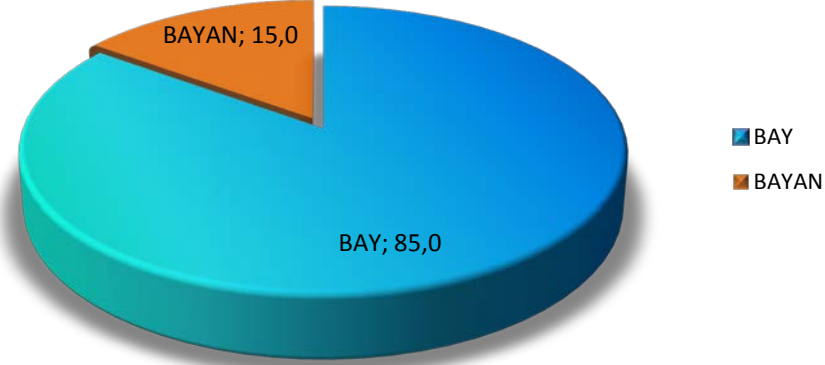
DANIŐTAY TETKİK HAKİMİ SAYISININ CİNSİYETE GÖRE DAĞILIMI



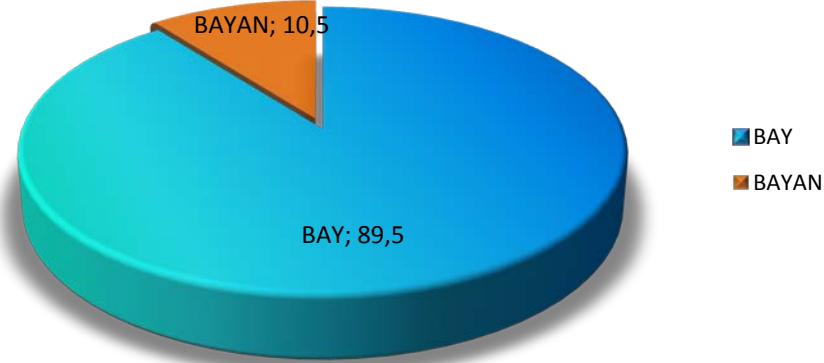
**YARGITAY
ÜYE, HAKİM VE CUMHURİYET SAVCISI KADRO DURUMU**

	BAY	%	BAYAN	%
ÜYE	322	85,0	57	15,0
TETKİK HAKİMİ	580	57,8	423	42,2
SAVCI	213	89,5	25	10,5
TOPLAM	1115	68,8	505	31,2

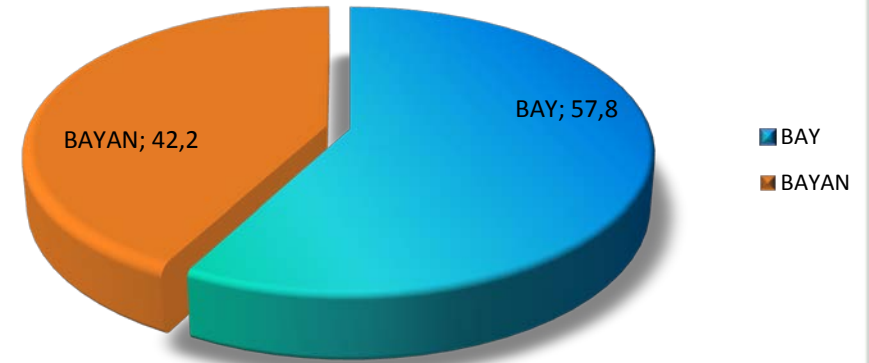
YARGITAY ÜYE SAYILARININ CİNSİYETE GÖRE DAĞILIMI



YARGITAY CUMHURİYET SAVCISI SAYISININ CİNSİYETE GÖRE DAĞILIMI



YARGITAY TETKİK HAKİMİ SAYISININ CİNSİYETE GÖRE DAĞILIMI



İDARİ YARGI HAKİMİ

	BAY	%	BAYAN	%
HAKİM	701	82,5	149	17,5



**ANAYASA MAHKEMESİ
RAPORTÖRÜ (HAKİM SINIFINDAN) KADRO
DURUMU**

	BAY	%	BAYAN	%
HAKİM	23	74,2	8	25,8

ANAYASA MAHKEMESİ RAPORTÖRÜ (HAKİM SINIFINDAN) CİNSİYETE GÖRE DAĞILIMI

